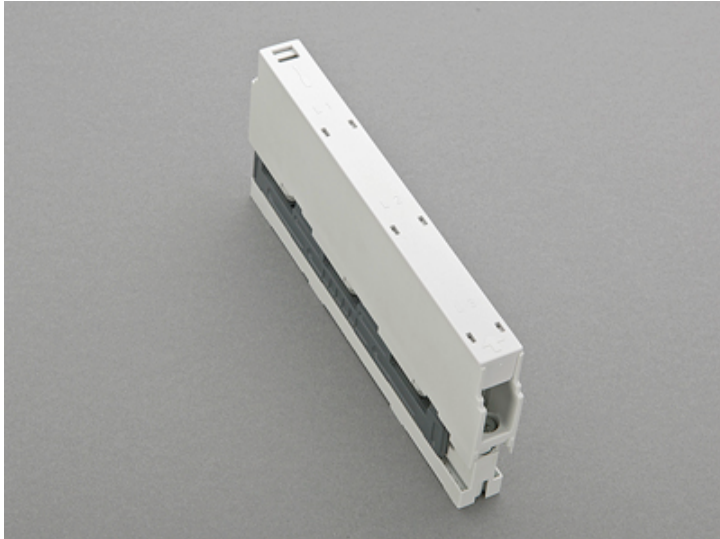


## connection busbar support (01484)



The picture may show a similar product.

### Description

Part No.: **01484**000  
connection busbar support  
3-pole, with integrated terminals 1.5 - 16 mm<sup>2</sup>  
for busbars 12, 15, 20, 25, 30 x 5, 10

### System

60Classic

### Advantages of the product

Connection busbar support with integrated terminals for feeding or tapping the busbar with internal screw holes, can also be used as centre support.

Product group 06

Subgroup 09

pack size 10

EAN 4021267014841

ECLASS 6.1 27400607

ECLASS 7.1 27400607

ETIM 4.0 EC001166

ETIM 5.0 EC001166

## Approvals

### Standards

IEC 61439-1:2020

CCC approval: no certification required

## Technical data

### Details IEC

#### Standards

IEC 61439-1:2020

#### Electrical data IEC

Rated current (IEC): 63 A

rated voltage (IEC) AC: 690 V

rated frequency (IEC): 50 / 60 Hz

rated isolation voltage  $U_i$  AC: 800 V

rated surge voltage  $U_{imp}$ : 6 kV

power dissipation of the article:

The power dissipation at a typical load of 80 % results to 0.5 W.

(The power dissipation at full load would be 0.8 W.)

#### Supplementary data IEC

The following values have been verified with tests under certain conditions. Please ask Wöhner for this conditions before designing your panel.

current capacity (IEC) max.: 80 A

Current capacity of the clamping point 80A

short-circuit withstand rating:

surge current strength > 30kA at busbar support separation of 550mm

surge current strength > 50kA at busbar support separation of 250mm

further values in the short-circuit withstand rating diagram

### **Mechanical data**

W x H x D: 20 x 200 x 87

weight: 25.6 kg/100

poles: 3-pole

for busbars: 12, 15, 20, 25, 30 x 5, 10

## Application notes

The insulation performance of the article depends on the installation conditions.

<https://pim.woehner.de/EN/EN/1000043888>